

Aktor M

Motorised Actuators



Motorised actuators are used in the heating, venting and air conditioning trades. The actuators can be used for room temperature control, among other things.

The Aktor M motorised actuators are modulating 0-10 V or 4-20 mA actuators that also feature either on/off or floating control. All actuators have 0-10 V position feedback. For Oventrop valves there are suitable adapters to connect the actuators to the valves.

Depending on the version, the actuators are available with spring return as normally closing or normally opening, so that the actuator can be used for various applications in an emergency.

Features

- + Automatic recognition of the control signal
- + Direction of action adjustable
- + Adjustment of the characteristic line on the actuator
- + Manual adjustment possible by lever

Product Overview



Item no. 1158030 (24 V AC/DC)

Modulating with 0...10 V or 4...20 mA or switching as on/off or floating actuator
Adjustable linear, square-law and equal percentage characteristic line



Item no. 1158031 (24 V AC/DC)

Modulating with 0...10 V or 4...20 mA or switching as on/off or floating actuator
Adjustable linear, square-law and equal percentage characteristic line
With spring return
Valves normally opening



Item no. 1158032 (24 V AC/DC)

Modulating with 0...10 V or 4...20 mA or switching as on/off or floating actuator
Adjustable linear, square-law and equal percentage characteristic line
With spring return
Valves normally closing

Product Details

Aktor M

Functions

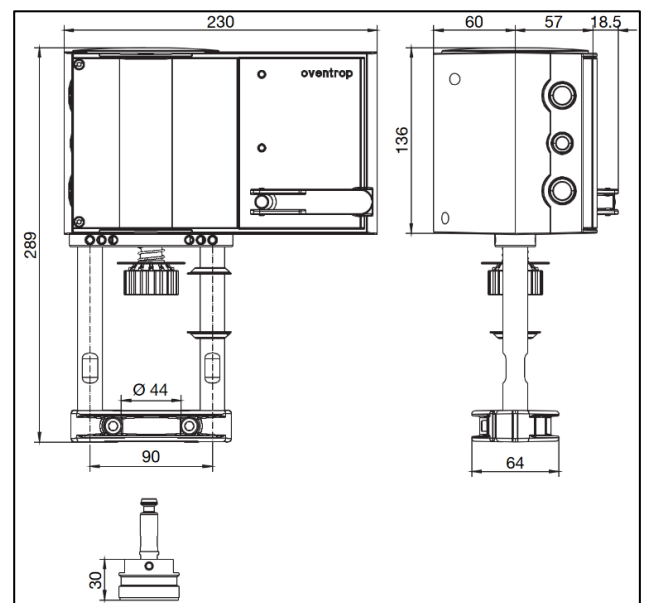
- Electronic, force-dependent switching
- Automatic recognition of the applied control signal
- Adjustment of the characteristic line on the actuator (linear, square-law, equal percentage)
- Independent adaptation
- Direction of action adjustable
- Selection of the type of characteristic line
- Setting of the positioning time by coding switch
- Manual adjustment possible by lever
- Lever as trigger for re-initialisation

LED Display

LED	Function
Both LEDs flash red	Initialisation
One LED flashes green	Actuator performs a stroke, direction according to LED
One LED lights up green	Idle position, last direction of travel according to LED
One LED lights up red	End position, valve position according to LED
Off	No power supply or no control in floating mode

Technical Data

Operating voltage	24 V AC/DC
Power consumption	
Item no. 1158030	10 W during operation 18 W in stroke end positions
Item no. 1158031/32	10 W during operation 20 W in stroke end positions
Control	0...10 V or 4...20 mA
Max. stroke	40 mm
Positioning force	
Item no. 1158030	2500 N
Item no. 1158031/32	2000 N
Positioning time	2 / 4 / 6 s / mm
Protection type	IP 66 nach EN 60529
Max. medium temperature	120 °C
Ambient temperature	-10...55 °C
Storage temperature	-10...55 °C
Number of spring returns (item no. 1158031/32)	> 4000



Dimensions of the actuators and connection dimensions of the adapter

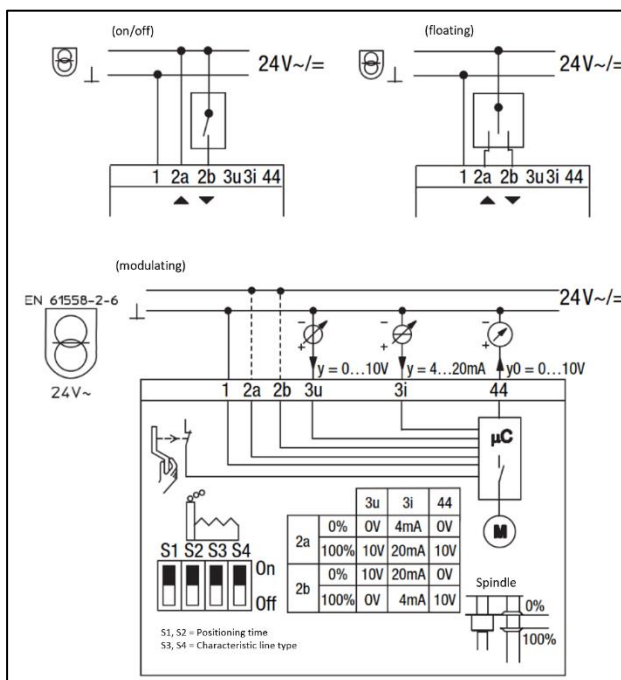
Range of application, installation and mounting

The electrical connection must comply with the regulations of the local Electricity Board.

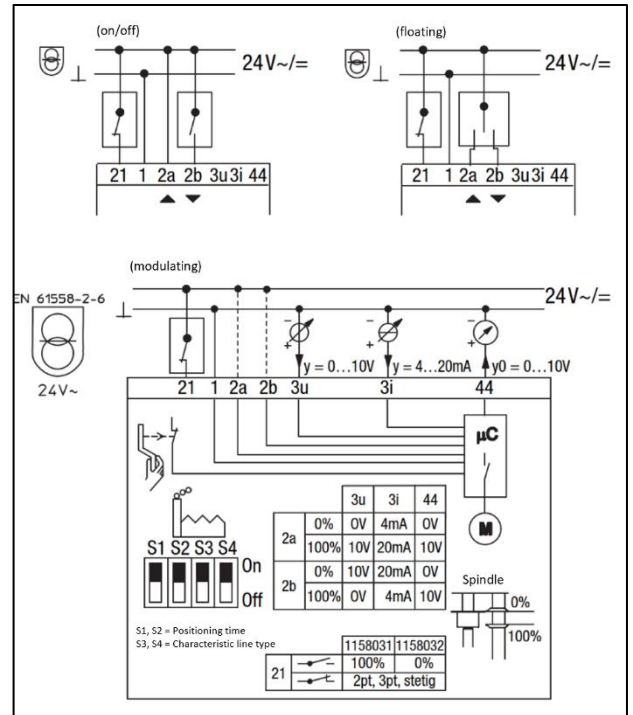
The connecting cable must not be laid on heat-carrying pipes or the like, as this accelerates the ageing of the cable material.

The Oventrop actuators can be operated in all installation positions, except for installation vertically downwards.

Depending on the wiring (see wiring diagrams), the actuators item no. 1158030/31/32 can be used as floating, on/off or 0 - 10 V or 4 - 20 mA actuator.




Wiring diagrams item no. 1158030



Wiring diagrams item no. 1158031/32

Accessory

	Description	Item no.
	Connection module 230 V	1158033