

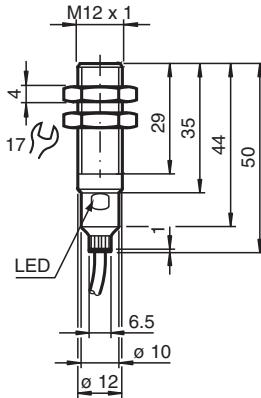
Magnetic field sensor

MB60-12GM50-E2

- Sensing range 60 mm based on DM60-31-15 magnet



Dimensions



Technical Data

General specifications

Switching function		Normally open (NO)
Output type		PNP
Rated operating distance	s_n	60 mm
Installation		flush in non-magnetic metal
Output polarity		DC
Assured operating distance	s_a	10 ... 48.6 mm
Output type		3-wire

Nominal ratings

Operating voltage	U_B	10 ... 30 V
-------------------	-------	-------------

Release date: 2022-05-18 Date of issue: 2022-05-18 Filename: 218382_eng.pdf

Refer to "General Notes Relating to Pepperl+Fuchs Product Information".

Pepperl+Fuchs Group
www.pepperl-fuchs.com

USA: +1 330 486 0001
fa-info@us.pepperl-fuchs.com

Germany: +49 621 776 1111
fa-info@de.pepperl-fuchs.com

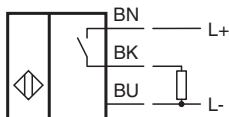
Singapore: +65 6779 9091
fa-info@sg.pepperl-fuchs.com

PEPPERL+FUCHS

Technical Data

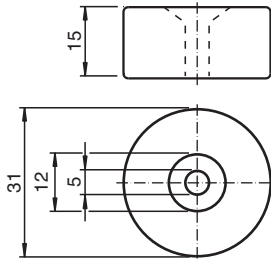
Switching frequency	f	0 ... 5000 Hz
Hysteresis	H	1 ... 10 %
Reverse polarity protection		reverse polarity protected
Short-circuit protection		pulsing
Voltage drop	U_d	≤ 2.5 V
Operating current	I_L	0 ... 200 mA
No-load supply current	I_0	≤ 10 mA
Switching state indicator		LED, yellow
Functional safety related parameters		
MTTF _d		2935 a
Mission Time (T _M)		20 a
Diagnostic Coverage (DC)		0 %
Compliance with standards and directives		
Standard conformity		
Standards		EN 60947-5-2:2007 IEC 60947-5-2:2007
Approvals and certificates		
Protection class		II
UL approval		cULus Listed, General Purpose
CSA approval		cCSAus Listed, General Purpose
CCC approval		CCC approval / marking not required for products rated ≤ 36 V
Ambient conditions		
Ambient temperature		-25 ... 75 °C (-13 ... 167 °F)
Mechanical specifications		
Connection type		cable PUR , 2 m
Core cross section		0.34 mm ²
Housing material		Stainless steel 1.4404 / AISI 316L
Sensing face		PBT
Degree of protection		IP67

Connection



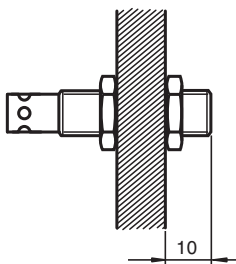
Additional Information

Magnet DM 60-31-15





Mounting

When installed in magnetic materials, a free space must be left.




Release date: 2022-05-18 Date of issue: 2022-05-18 Filename: 218382_eng.pdf

Accessories

	BF 12	Mounting flange, 12 mm
	DM 25-32-07	Permanent magnet for magnetic field sensors

Refer to "General Notes Relating to Pepperl+Fuchs Product Information".

Accessories

	DM 60-31-15	Permanent magnet for magnetic field sensors
---	--------------------	---

Release date: 2022-05-18 Date of issue: 2022-05-18 Filename: 218382_eng.pdf

Refer to "General Notes Relating to Pepperl+Fuchs Product Information".

Pepperl+Fuchs Group
www.pepperl-fuchs.com

USA: +1 330 486 0001
fa-info@us.pepperl-fuchs.com

Germany: +49 621 776 1111
fa-info@de.pepperl-fuchs.com

Singapore: +65 6779 9091
fa-info@sg.pepperl-fuchs.com