

Magnetic field sensor

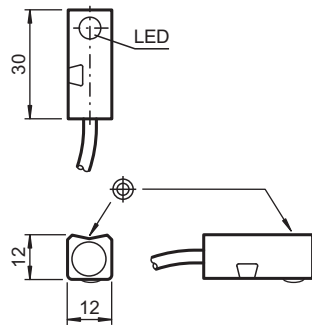
MB35-F12-1N-5M



- Comfort series
- 35 mm flush



Dimensions



Technical Data

General specifications

| | | |
|----------------------------|-------|--------------------|
| Switching function | | Normally open (NO) |
| Output type | | NAMUR |
| Rated operating distance | s_n | 35 mm |
| Installation | | flush |
| Assured operating distance | s_a | 0 ... 35 mm |
| Output type | | 2-wire |

Nominal ratings

| | | |
|---------------------------|-------|--------------------------------------|
| Nominal voltage | U_o | 8.2 V (R_i approx. 1 k Ω) |
| Switching frequency | f | 0 ... 5000 Hz |
| Current consumption | | |
| Magnet detected | | ≥ 3 mA |
| Magnet not detected | | ≤ 1 mA |
| Switching state indicator | | LED, yellow |

Functional safety related parameters

| | | |
|------------------------|--|--------|
| MTTF _d | | 2781 a |
| Mission Time (T_M) | | 20 a |

Release date: 2022-03-07 Date of issue: 2022-03-07 Filename: 70108304_eng.pdf

Refer to "General Notes Relating to Pepperl+Fuchs Product Information".

Pepperl+Fuchs Group
www.pepperl-fuchs.com

USA: +1 330 486 0001
fa-info@us.pepperl-fuchs.com

Germany: +49 621 776 1111
fa-info@de.pepperl-fuchs.com

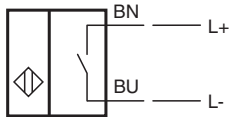
Singapore: +65 6779 9091
fa-info@sg.pepperl-fuchs.com

PEPPERL+FUCHS

Technical Data

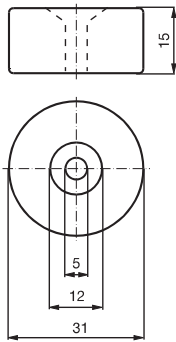
| | |
|---|---|
| Diagnostic Coverage (DC) | 0 % |
| Compliance with standards and directives | |
| Standard conformity | |
| NAMUR | EN 60947-5-6:2000 |
| Standards | EN 60947-5-2:2007 EN 60947-5-2/A1:2012 |
| Approvals and certificates | |
| IECEX approval | |
| Equipment protection level Gb | IECEX TUN 20.0007 |
| Equipment protection level Da | IECEX TUN 20.0007 |
| ATEX approval | |
| Equipment protection level Gb | TÜV 20 ATEX 241336 |
| Equipment protection level Da | TÜV 20 ATEX 241336 |
| Ambient conditions | |
| Ambient temperature | -25 ... 70 °C (-13 ... 158 °F) |
| Mechanical specifications | |
| Connection type | cable PVC , 5 m |
| Core cross section | 0.34 mm ² |
| Housing material | anodized aluminum |
| Sensing face | black plastic |
| Degree of protection | IP67 |
| General information | |
| Use in the hazardous area | see instruction manuals |

Connection

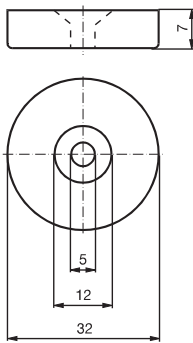


Additional Information

Magnet DM 60-31-15



Magnet DM 25-32-07



Release date: 2022-03-07 Date of issue: 2022-03-07 Filename: 70108304_eng.pdf

Refer to "General Notes Relating to Pepperl+Fuchs Product Information".

Pepperl+Fuchs Group
www.pepperl-fuchs.com

USA: +1 330 486 0001
fa-info@us.pepperl-fuchs.com

Germany: +49 621 776 1111
fa-info@de.pepperl-fuchs.com

Singapore: +65 6779 9091
fa-info@sg.pepperl-fuchs.com