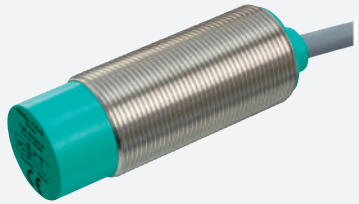


Capacitive sensor

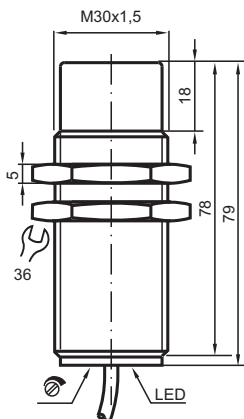
CJ10-30GM-WS



- 10 mm non-flush
- The switching distance can be set over a wide range with the potentiometer



Dimensions



Technical Data

General specifications

| | | |
|----------------------------|-------|--------------------|
| Switching function | | Normally open (NO) |
| Output type | | Two-wire |
| Rated operating distance | s_n | 10 mm |
| Installation | | non-flush |
| Output polarity | | AC |
| Assured operating distance | s_a | 0 ... 7.2 mm |
| Output type | | 2-wire |

Nominal ratings

| | | |
|-------------------------|--|-------|
| Installation conditions | | |
| A | | 0 mm |
| B | | 0 mm |
| C | | 30 mm |
| F | | 50 mm |

Release date: 2022-06-21 | Date of issue: 2022-06-21 | Filename: 037645_eng.pdf

Refer to "General Notes Relating to Pepperl+Fuchs Product Information".

Pepperl+Fuchs Group
www.pepperl-fuchs.com

USA: +1 330 486 0001
fa-info@us.pepperl-fuchs.com

Germany: +49 621 776 1111
fa-info@de.pepperl-fuchs.com

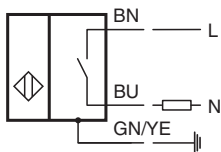
Singapore: +65 6779 9091
fa-info@sg.pepperl-fuchs.com

 PEPPERL+FUCHS

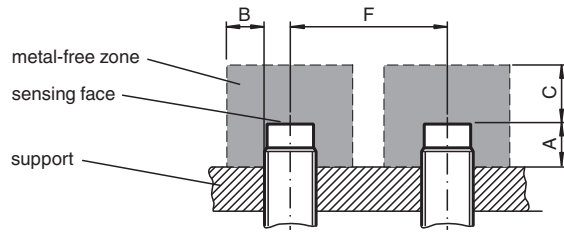
Technical Data

| | | |
|---|-----------|--|
| Operating voltage | U_B | 20 ... 253 V AC ¹⁾ |
| Switching frequency | f | 0 ... 10 Hz |
| Hysteresis | H | 2 ... 10 typ. 5 % |
| Reverse polarity protection | | reverse polarity tolerant |
| Voltage drop at I_L | | |
| Voltage drop $I_L = 100$ mA, switching element on | U_d | typ. 7 V |
| Momentary current (20 ms, 0.1 Hz) | | 0 ... 1200 mA |
| Rated insulation voltage | U_{BIS} | 1500 V |
| Operating current | I_L | 5 ... 200 mA |
| Lowest operating current | I_m | 5 mA |
| Off-state current | I_r | 0.7 ... 1.5 mA typ. |
| Time delay before availability | t_v | ≤ 300 ms |
| Switching state indicator | | LED, yellow |
| Indicators/operating means | | |
| Potentiometer | | sensitivity adjustment |
| Compliance with standards and directives | | |
| Standard conformity | | |
| Standards | | EN 60947-5-2:2007 EN 60947-5-2/A1:2012 IEC 60947-5-2:2007 IEC 60947-5-2 AMD 1:2012 |
| Approvals and certificates | | |
| UL approval | | cULus Listed, General Purpose |
| CCC approval | | Certified by China Compulsory Certification (CCC) |
| Ambient conditions | | |
| Ambient temperature | | -25 ... 70 °C (-13 ... 158 °F) |
| Storage temperature | | -25 ... 85 °C (-13 ... 185 °F) |
| Mechanical specifications | | |
| Connection type | | cable PVC , 2 m |
| Core cross section | | 0.75 mm ² |
| Housing material | | Stainless steel 1.4305 / AISI 303 |
| Sensing face | | PBT |
| Degree of protection | | IP67 |
| Note | | ¹⁾ In the temperature range below 0 °C, permissible operating voltage U_b 80...253 V Safety fuse ≤ 0.8 A (quick-blow) according to IEC 60127-2 Sheet 1 Recommendation: after a short circuit, check that the device is functioning correctly. |

Connection



Installation



Accessories

| | | |
|---|---------------------|-------------------------------|
|  | <p>BF 30</p> | <p>Mounting flange, 30 mm</p> |
|---|---------------------|-------------------------------|