

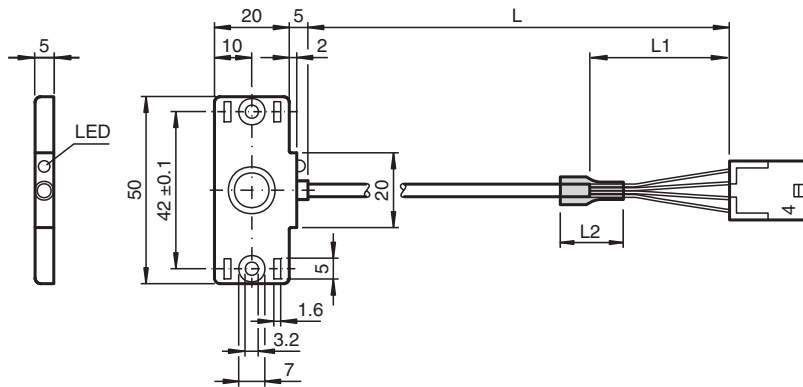
Capacitive sensor

CBN5-F46-E2-360MM-4MOL-Y

- 5 mm non-flush
- 3-wire DC with additional wire for Teach-In
- Adjustable measurement range via external teach input
- Mounting slots for cable ties
- Thru-holes for screw mounting
- Molex connector



Dimensions



Technical Data

General specifications		
Switching function		Normally open (NO)
Output type		PNP
Identification Number		6200337 REV. A
Rated operating distance	s_n	5 mm
Installation		non-flush
Output polarity		DC
Assured operating distance	s_a	0 ... 3.5 mm
Output type		3-wire
Nominal ratings		
Installation conditions		
B		0 mm
C		10 mm
F		20 mm / 50 mm
Operating voltage	U_B	10 ... 30 V DC
Switching frequency	f	0 ... 50 Hz
Hysteresis	H	5 ... 15 typ. 10 %
Reverse polarity protection		reverse polarity protected
Short-circuit protection		pulsing
Voltage drop	U_d	≤ 2 V

Release date: 2022-12-02 Date of issue: 2022-12-02 Filename: 70156340_eng.pdf

Refer to "General Notes Relating to Pepperl+Fuchs Product Information".

Pepperl+Fuchs Group
www.pepperl-fuchs.com

USA: +1 330 486 0001
fa-info@us.pepperl-fuchs.com

Germany: +49 621 776 1111
fa-info@de.pepperl-fuchs.com

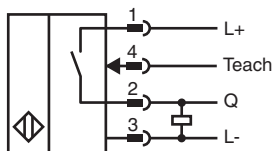
Singapore: +65 6779 9091
fa-info@sg.pepperl-fuchs.com

PF PEPPERL+FUCHS

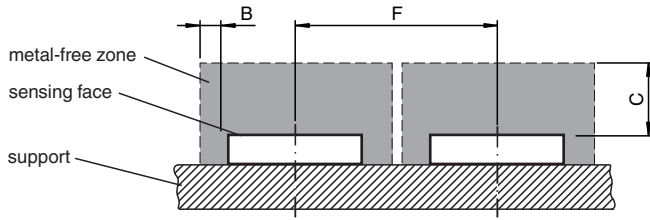
Technical Data

Operating current	I_L	0 ... 100 mA
Lowest operating current	I_m	0 mA
Off-state current	I_r	0 ... 0.5 mA typ. 0.04 mA
Off-state current $T_U = 40\text{ °C}$, switching element off		$\leq 100\text{ }\mu\text{A}$
No-load supply current	I_0	$\leq 15\text{ mA}$
Time delay before availability	t_v	$\leq 80\text{ ms}$
Switching state indicator		LED, yellow
Compliance with standards and directives		
Standard conformity		
Standards		EN IEC 60947-5-2
Approvals and certificates		
UL approval		cULus Listed, General Purpose, Class 2 Power Source
CCC approval		CCC approval / marking not required for products rated $\leq 36\text{ V}$
Ambient conditions		
Ambient temperature		$-25\text{ ... }70\text{ °C}$ ($-13\text{ ... }158\text{ °F}$)
Storage temperature		$-40\text{ ... }85\text{ °C}$ ($-40\text{ ... }185\text{ °F}$)
Mechanical specifications		
Connection type		fixed cable with plug
Housing material		PBT
Sensing face		PBT
Degree of protection		IP67
Connector		
Number of pins		4
Connection assembly		Molex connector 43640-0401 Molex contact 43031-0004
Cable		
Cable diameter		$3.5\text{ mm} \pm 0.2\text{ mm}$
Bending radius		$> 10 \times$ cable diameter
Material		PVC
Color		grey
Number of cores		4
Core cross section		0.14 mm^2
Length	L	$362\text{ mm} \pm 6\text{ mm}$ further length specifications: L1 = approx. 30 mm L2 = approx. 13 mm

Connection



Installation Conditions



Release date: 2022-12-02 Date of issue: 2022-12-02 Filename: 70156340_eng.pdf

Refer to "General Notes Relating to Pepperl+Fuchs Product Information".

Pepperl+Fuchs Group
www.pepperl-fuchs.com

USA: +1 330 486 0001
fa-info@us.pepperl-fuchs.com

Germany: +49 621 776 1111
fa-info@de.pepperl-fuchs.com

Singapore: +65 6779 9091
fa-info@sg.pepperl-fuchs.com

 **PEPPERL+FUCHS**

Teach-In

Teach-In Instructions

1. For Teach-In connect pin WH to pin L+ with target at desired distance for 2.5 s ... 5 s.
->LED is in green light mode.
2. Release connection between first (2.5 s) and second flash (5 s).
-> LED will flash (5 times in quick succession) if process is successful.

Note

Holding the connection 5 s ... 7.5 s resets the setting. If during Teach-In on product target is out of range (> 6 mm), LED (yellow light) will blink slowly 3 times. The taught sensing distance is stored in the sensor. The Teach-in value is still available when the power supply is turned off. The endurance of this non-volatile memory is rated for more than 100,000 teach-in repetitions.