

DUAL PLATE CHECK VALVE

(Wafer Type), PN16

The Dual Plate Check Valves is designed for Chilled & Hot Water, it is stronger, lighter in weight and smaller in size as compared to other Check Valves. It Prevents back Flow pressure.



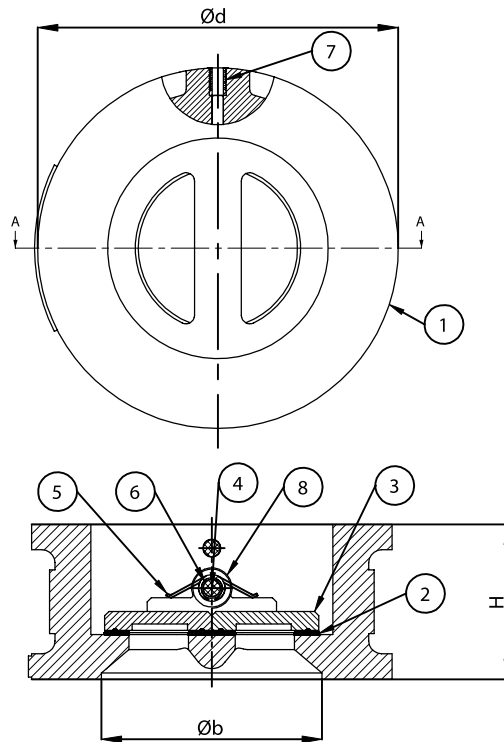
FEATURES AND BENEFITS

- Cast Iron / Ductile Iron Body
- Ductile Iron Disc / Stainless Steel Disc
- Less Wear and Tear of Seat Surfaces
- Being cylindrical body, Stresses are uniformly distributed
- Wafer type Design, to take lesser space than the Conventional Check Valve
- Much longer Seat life because of Ductile Iron/ S.S. to Rubber Contact
- Water hammering effect is minimized in this design, since the closing of valve does not depend on any back pressure or flow

SPECIFICATIONS

Sizes	DN50-DN600
Nominal pressure	PN16
Medium Temperature	-10°C ~ +110°C Max.
Medium Type	Water
TEST PRESSURE (HYDROSTATIC)	
Shell Test pressure	24 Bar
Seat Test pressure	17.6 Bar
Suitable Insertion	ISO: 7005-2, IS 1538, ANSI B Class-125 / ASME B Class- 150, Table 'D' and Table 'E'

DIMENSION (MM)



PART DESCRIPTIONS

PT NO.	PART NAME	MATERIAL	SPECIFICATION	QTY
1	BODY	Cast Iron/Ductile Iron	IS:210,Gr FG 200 /IS 1865 Gr. 400/15	1
2	SEAT	Rubber	EPDM	1
3	PLATES	Ductile Iron / Stainless Steel	IS 1865 Gr. 400/15/SS304	2
4	SHAFT	Stainless Steel	ASTM A 276,Gr. SS410	2
5	SPRING	Stainless Steel	AISI 302	2
6	O-RINGS	Rubber	NITRILE / EPDM	4
7	PLUG	Mild Steel (Chrome Plated)	M.S. (CROME PLATED	2
8	WASHERS	Stainless Steel	AISI 304	4-8

OUTSIDE DIMENSION (MM)

SIZE	50	65	80	100	125	150	200	250	300	350	400	450	500	600
IN INCH	(2")	(2-1/2")	(3")	(4")	(5")	(6")	(8")	(10")	(12")	(14")	(16")	(18")	(20")	(24")
$\varnothing b$ (min)	50	65	80	100	125	150	200	250	300	350	400	450	500	600
$\varnothing d + 2$	95	110	130	160	188	212	272	340	410	442	495	540	595	698
H +/- 1.5	54	54	57	64	70	76	95	108	143	184	191	203	219	222

For more information,

www.honeywellbuildings.in

Call: 000-8000-502167

Email: enquiry.mms@honeywell.com

Honeywell HBT India Buildings

Unitech Trade Center, 5th Floor, Sector-43,
Block C, Sushant Lok Phase - I,
Gurgaon - 122 002.

DUAL PLATE CHECK VALVE | 01 | 08/23
© 2023 Honeywell International Inc.

IMPACT
by Honeywell